



# UNLOCK THE POTENTIAL OF SMARTER SPACES

Luxury buildings | Offices | Hospitality

## Built for today, scalable for tomorrow.

With two decades of expertise and a commitment to luxury and cutting-edge technology, we provide ongoing maintenance to ensure your systems operate flawlessly, seamlessly integrated and controlled

through a single platform. Our solutions are meticulously tailored for high-end MDUs, residential properties, offices, hospitality venues, and high-rise buildings of any scale.

### LUXURY BUILDINGS

- EXTERIOR LIGHT AND SECURITY..... 6
- COMMUNAL & MULTI ROOM AUDIO..... 9
- CINEMA ROOMS..... 10
- SWIMMING POOLS, SPAS & GYMS.....13
- MEETING ROOM AUTOMATION.....14

### LUXURY RESIDENCES

- LIGHTNING & SCENES .....21
- BLINDS CUSTOMISATION & AUTOMATION ..... 22

- AUDIO & MULTI-ROOM AUDIO..... 25
- LIGHTING DESIGN & ARTWORK ..... 26
- CLIMATE CONTROL & BMS..... 29
- INTELLIBROADBAND & INTERNET ..... 30

### CORE EXCELLENCE

- WORKING WITH INDUSTRY LEADERS..... 32
- R&D IN AI, SMART SYSTEMS & CYBERSECURITY ... 33
- TEAM, AWARDS & TESTIMONIAL ..... 34-35



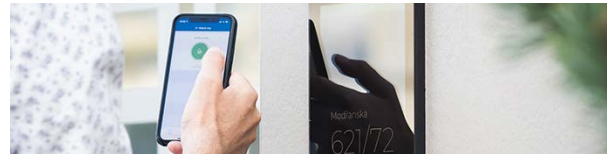
# LUXURY BUILDINGS



## Exterior CCTV

We maintain and upgrade major outdoor CCTV systems from leading brands such as Hikvision, Dallmeier, Dahua, and Axis.

These systems include cameras and motion detectors, ensuring you are always aware of what's happening around your property. With local backups on network video recorders and secure cloud storage, you can be confident that your data is always accessible and safely stored.



## Security & Access Control

We manage integrated solutions that combine intrusion alerts, CCTV, motion sensors, door entry, and access control systems.

Our partnerships with leading brands such as Came BPT, 2N, Paxton, Golmar, Comelit, and Urmet ensure top-tier performance and reliability.



Explore our project  
in Kensington, London

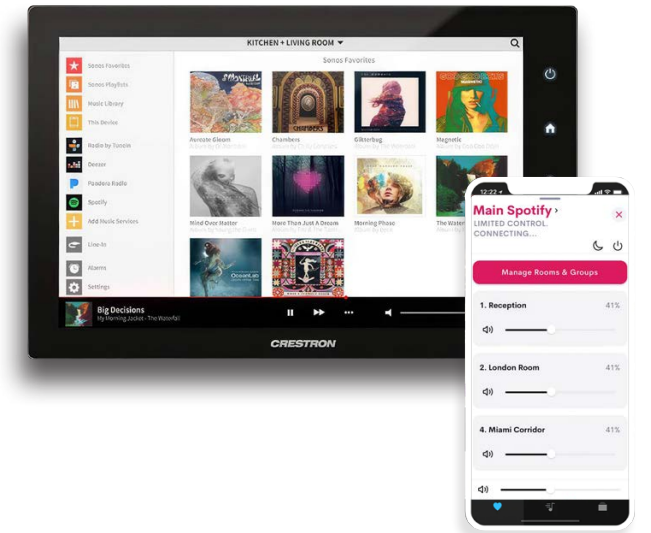






## Communal & Multi room audio

We ensure your smart music system delivers the perfect sound, whether playing different music in separate rooms or synchronizing the same audio throughout your entire building.



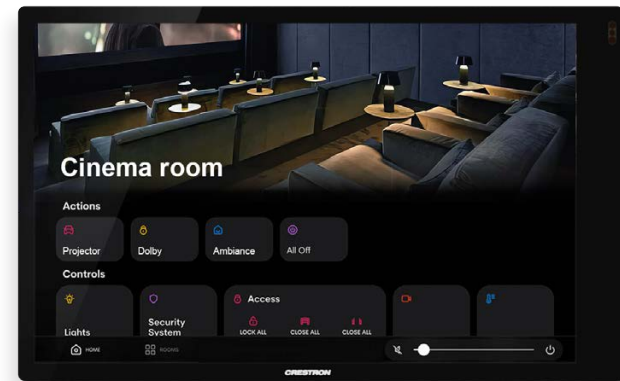
Explore our project  
in Kensington, London

## Luxury smart control

Control your environment effortlessly with elegantly designed wall-mounted keypads and touch panels.

This is complemented by a remote and/or your personal mobile device(s) with a programmable control interface in a single application.

For ultimate convenience, integrate ambient control options like Amazon Echo (Alexa) to command your space with just your voice.



**8K**  
ULTRA HD

**DOLBY**  
SURROUND

## Expertly maintained cinema rooms

From wall-mounted keypads and touch panels to amplifiers, projectors, surround sound speakers, and lighting and climate controls, we provide comprehensive solutions for an immersive and seamless experience.





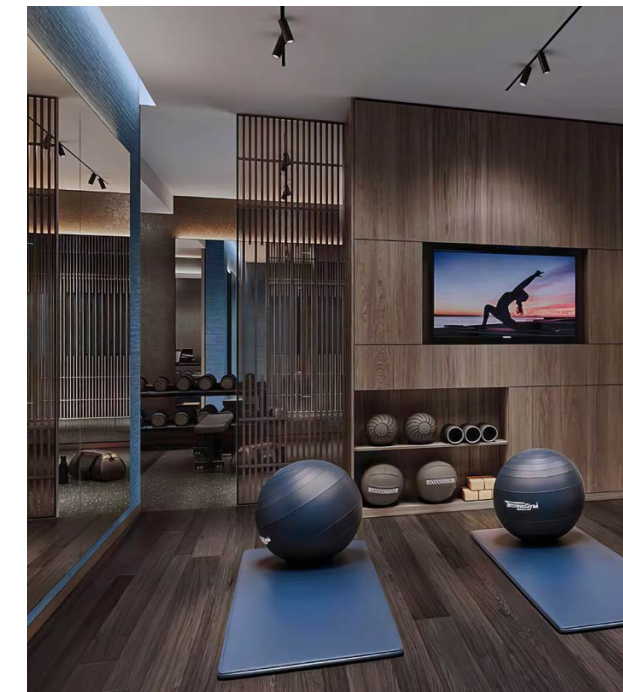


## Swimming pools, spas & gyms

Enjoy your swim, sauna, or workout with optimal climate and lighting settings. Additionally, indulge in premium audio-visual entertainment, expertly maintained by our fully qualified engineers.



Explore our lighting  
design projects online



# Meeting room automation

Our maintenance packages include room booking and video conferencing systems, commonly found in luxury buildings where comfort and productivity are paramount for residents and visitors. Our professional and dedicated IT engineers are equipped to ensure your systems work flawlessly, providing support both in person and remotely.



Discover our project online







# LUXURY RESIDENCES

## Maintenance of Luxury Residences

For peace of mind, we offer bespoke maintenance and repair contracts for residential installations and communal areas in prestigious buildings across Central London. Whether in private homes or shared spaces, all systems are meticulously managed to operate seamlessly from a single, centralised platform—easily controlled via smartphone or wall panels.

Our commitment to quality and performance in maintaining Building Management Systems (BMS) ensures preventive care to minimise downtime.

Our engineers are trained in renowned systems such as Trend, Tridium, Loxone, and Delta, ensuring exceptional expertise. Our services extend the lifespan of equipment while enhancing comfort and security, covering all smart systems including lighting (Lutron

and Crestron), climate control (Daikin and Mitsubishi), satellite TV (SkyTV and streaming hubs), door entry and access control (Paxton and BPT), broadband (Hyperoptic and BT Fiber), CCTV (HikVision and Dallmeier), intruder alarms (Banham and Texecom), and audiovisual systems (B&W and major monitor and projector brands).

With both preventative and responsive care, and a dedicated team based in London, swift response times are guaranteed, keeping properties up to date and running smoothly for years to come.

When new upgrades are required, we ensure systems operate seamlessly from a single, centralised platform—easily controlled via smartphone or wall panels—and are covered by our 5-year warranty.

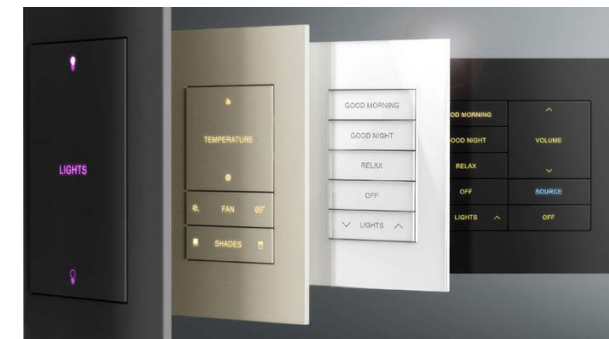






## Lighting

We maintain & design and upgrade smart lighting, creating the perfect ambience for your residents.



We are **CRESTRON**  
lighting award winners

**LUTRON**  
CERTIFIED INTEGRATED PARTNER



## Pre-set Ambience

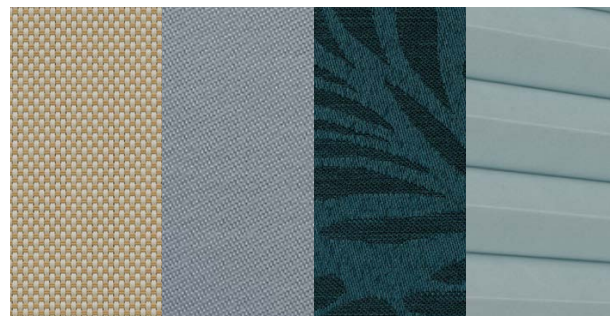
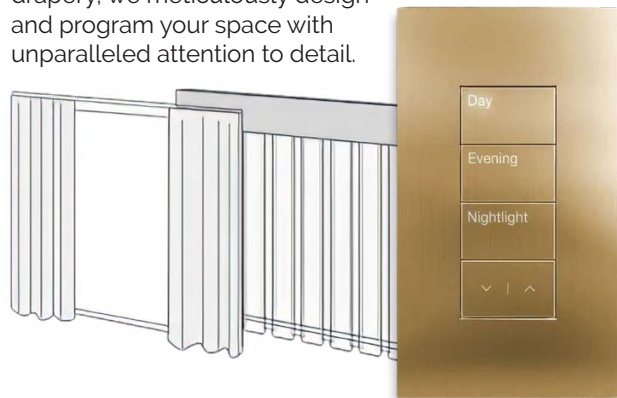
We can set up pre-set lighting scenes like morning, evening, or entertainment.



## Automated blinds & curtain tracks

Maintenance of smart shading, blinds, and curtain tracks will extend their lifespan and ensure optimal performance.

From automated curtains and blinds to ceiling-mounted drapery, we meticulously design and program your space with unparalleled attention to detail.



## Curated selection of materials

When upgrading from old to new, our dedicated design team will guide you through material and product selection, precise measuring, installation, and ongoing maintenance.

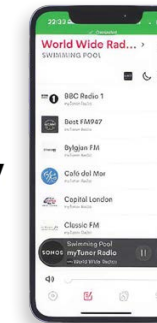
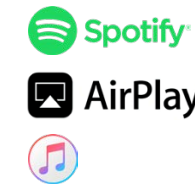




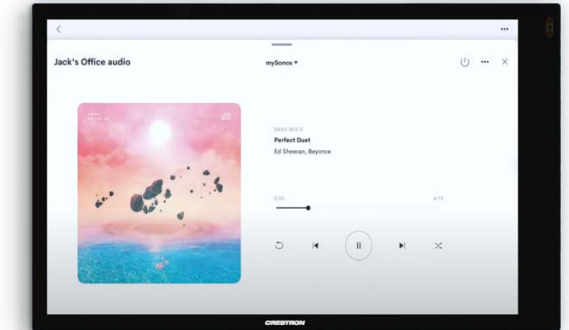


## Audio speakers

Let us take care of your high-fidelity audio system, ensuring you experience your music exactly as you desire, with unmatched sound quality.



Explore our  
Pine Grove project online



## Multi room audio

We ensure you can enjoy different music in each room or synchronize the same audio throughout your space with options like 'party' mode and more.



## Lighting design for artwork

Exceptional lighting is essential for highlighting artwork, shaping its perception and appreciation.

At IntelliCasa, we specialise in managing your showpiece lighting and, if needed, enhancing illumination by adding the perfect fittings, expertly programmed to achieve outstanding results.



## Functional & aesthetic illumination

IntelliCasa offers a comprehensive service, extending the lifespan of lighting solutions that artfully blend aesthetics with functionality.

Our expert engineers meticulously craft bespoke lighting plans, proactively troubleshooting and anticipating any necessary upgrades or replacements.



Explore our lighting  
design projects online







## Climate control & BMS

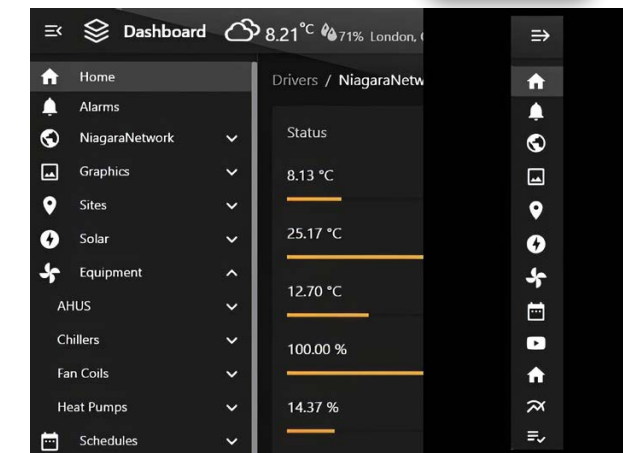
Our technical team expertly services **building management systems**, including HVAC and smart home controls, to ensure a consistent level of comfort throughout the year. We provide maintenance and support for any existing BMS systems in your property, keeping them running smoothly and efficiently.



Discover our climate control projects online.

## Humidity & cooling

We design, install, maintain, and help monitor humidity and cooling systems, ensuring precise control for optimal indoor air quality.





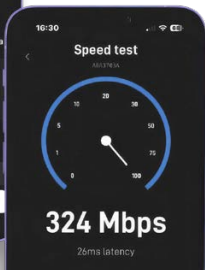
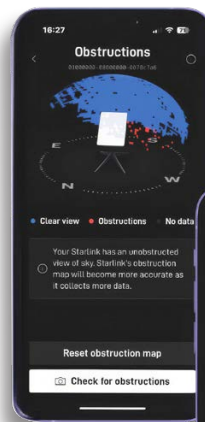
# IntelliBroadband & Wi-fi

We ensure your building's Wi-Fi is up-to-date, free of dead spots, and always well-connected, providing fast and reliable internet speed along with peace of mind.



# Cloud storage & network solutions

A reliable IT and cloud solution is essential. At IntelliCasa, we ensure your data is seamlessly synchronized and securely protected across multiple homes and buildings, ensuring flawless operations.







## R&D in AI-driven cybersecurity

As members of the Industrial Advisory Board at UCL's EEE department and in partnership with UCL and City on their Continuous Development Programme, we are advancing AI-driven systems to enhance IoT network security.

Our smart sockets and circuit breakers integrate seamlessly to automatically detect and neutralize cyber threats, delivering robust protection across connected environments.



## Core Excellence - working with industry leaders

By partnering with the industry's leading brands, we've honed our expertise, allowing us to recommend the perfect product combinations for seamless integration and optimal performance.

We are proud to be official partners with:



In addition, we work with:



## Our Team & testimonials

We are a team of smart home experts committed to transforming living spaces into intelligent, luxurious environments.

Our field team is composed entirely of fully qualified engineers, specializing in the installation and maintenance of best-in-class systems.

Dedicated to prestigious properties, we pride ourselves on delivering trust and unmatched quality.



5 Star Google rating

Best Business Awards 2020

Crestron's Best Lighting Installation

SSIP accreditation

Safe Contractor Approved



Business Awards 2019

“IntelliCasa's professionalism and expertise have significantly enhanced our workplace at Venture X Chiswick Park, making them an invaluable partner. Their technology in the reception area, including advanced light control and a state-of-the-art music system, creates an inviting atmosphere for our clients and guests. The boardroom is equipped with intuitive touch panels and consoles, facilitating effortless use of Teams, Google Hangouts, and Zoom for our meetings. Intelicasa's support is exceptional, always available to assist and ensure everything runs smoothly”



Read more of our  
customer feedback





**Every project is unique, and we assemble a bespoke team tailored specifically to your needs.**



**Elie**

UK & general enquiries  
[enquiries@intellcasa.com](mailto:enquiries@intellcasa.com)

**+44 20 7205 2536**



[intellcasa.com](https://intellcasa.com)

## **UNITED KINGDOM**

IntelliCasa Ltd  
Floor 5, 1 Ariel Way  
London, W12 7SL

## **FRANCE**

IntelliCasa SAS  
129 Impasse de la Fillière  
74370 Fillière

## **SWITZERLAND**

IntelliCasa SARL  
Rue Eugène-Marziano 22  
1227 Les Acacias